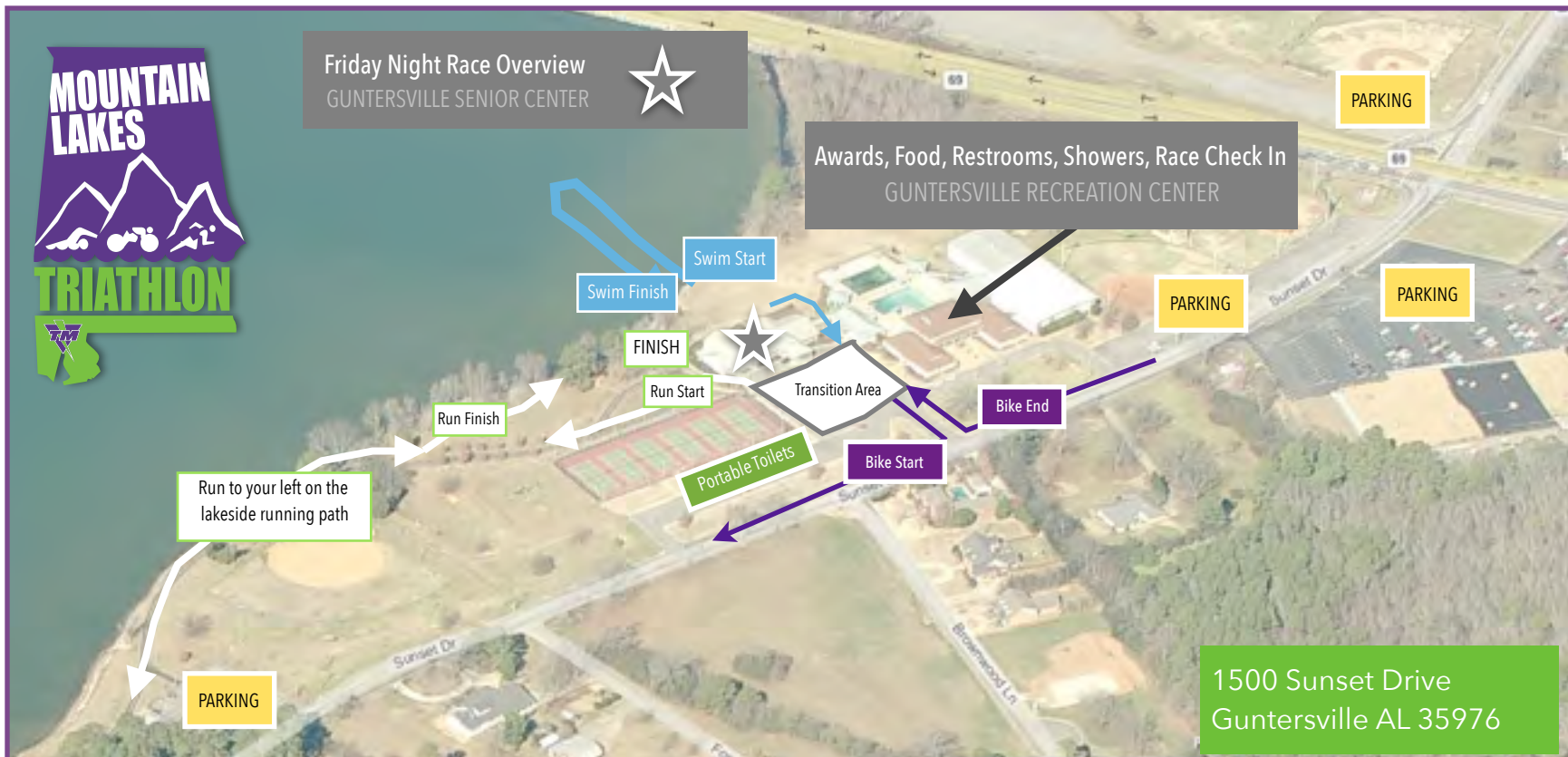


Mountain Lakes Triathlon Event Staging: Race Check In, Parking, Transition, Meeting, Awards, Food, Toilets, Showers



RETRIEVING YOUR BIKE AND EQUIPMENT FROM RACE TRANSITION & LEAVING THE RACE SITE

- Be sure you still have your body marking or race bib number and the provided wrist band to retrieve your equipment from the race transition area
- This area is controlled for your safety so we can insure only racers enter the area and take only their equipment
- Racers will be allowed to retrieve their bikes after the last biker returns from the bike course or as soon as race staff feels like they can safely escort racers to their bike rack location without interfering with another participants race
- There is an exit gate marked in transition - please look for this gate to retrieve your belongings - this gate is not typically the bike in / our or run out area, but a neutral location that allows those that finish early to remove items while others may not be finished racing
- **PLEASE BE CAUTIOUS OF THOSE STILL RACING IF YOU LEAVE EARLY!** The bike course is on the road adjacent to all parking options. When you leave the race site to go to your car, please do not walk your bike along Sunset Drive. Also be aware of crossing in front of any returning bikers. THANK YOU!

PARKING NOTE: Please do not park in the spaces closest to the retail fronts of the Piggly Wiggly Plaza to allow shoppers easy access to these stores.